

## Document 2: The Patch Tool

A fundamental introduction to working with the Patch Tool

1. What is the Patch Tool
2. How to Use the Patch Tool
3. Using the Patch Tool Tutorial
4. To work along download Patch01.jpg, Patch02.jpg, Patch03.jpg

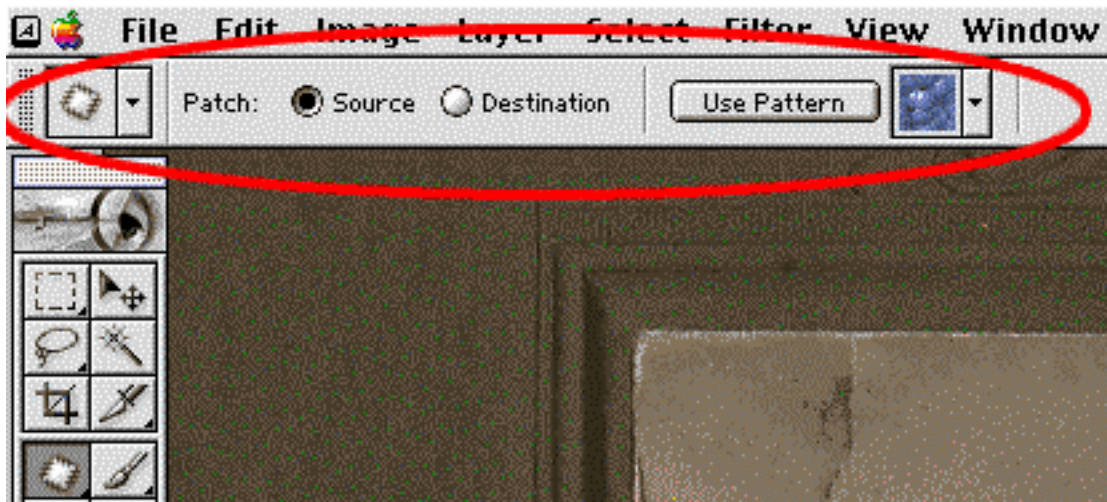
---

### 1. What is the Patch Tool

- 1.) The Patch tool lets you repair a selected area with pixels from another area or a pattern.
- 2.) Like the Healing Brush tool, the Patch tool matches the texture, luminosity, and color of the sampled pixels to the source pixels.
- 3.) When repairing with pixels from the image, select a small area to produce the best result.

### 2. How to Use the Patch Tool ... the Cliff Notes version ... followed by step-by-step tutorials.

- 1.) In a nutshell – you make a selection with the Patch tool or any selection tool, drag the selected area with the Patch tool, and upon releasing the mouse the healing technology will make the repair.
- 2.) The most important decision to make *before* using the Patch tool is whether to *patch from source*, *from destination* or *from pattern*. Before using the Patch tool take a moment to evaluate the image and image damage to decide which of the three options to use.

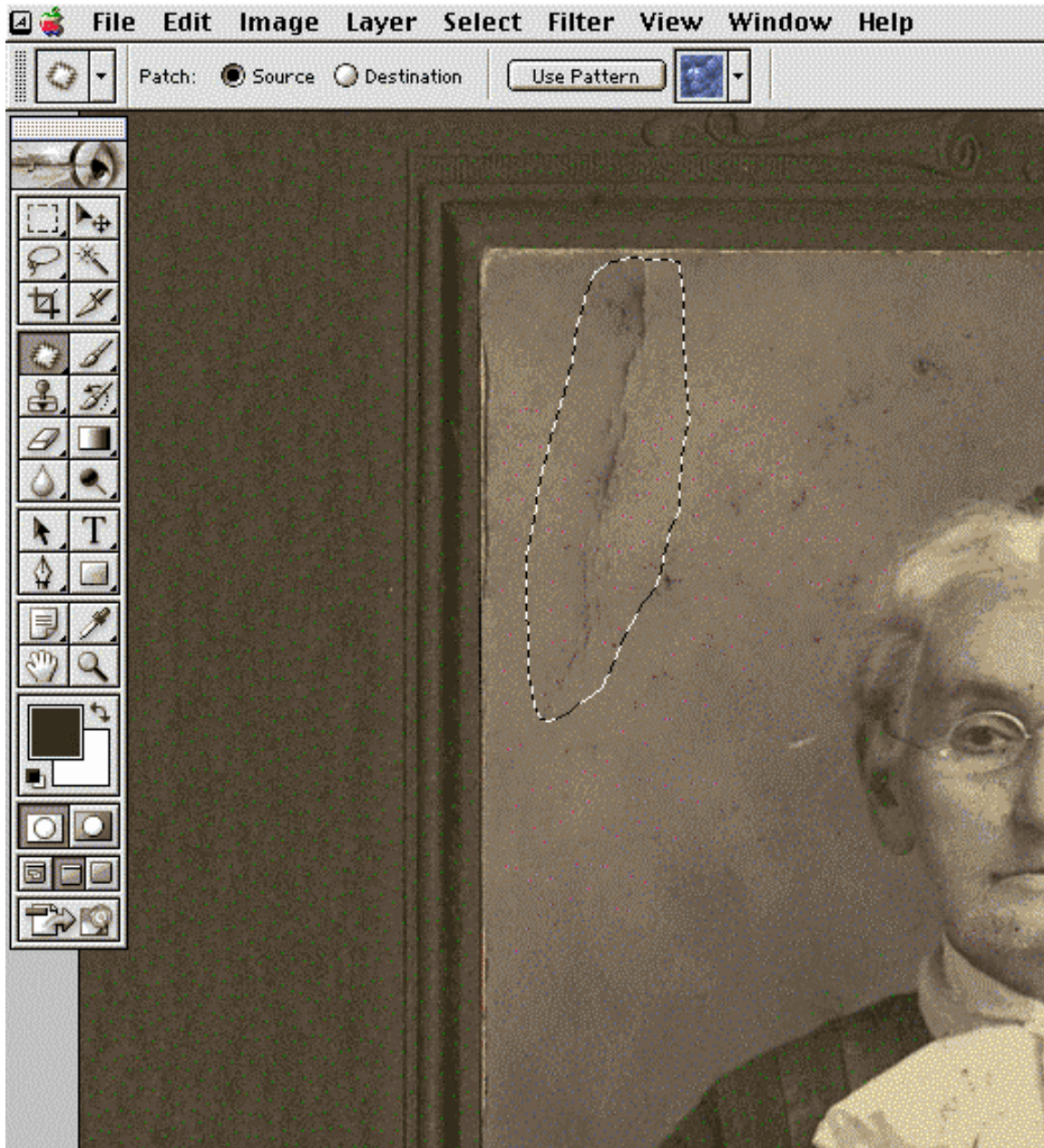


- *Patching from Source* = circle the *damaged* area and move the selection to good image information. Use this choice when the damaged area is uneven, ragged, and/or within similarly toned areas.
- *Patching from Destination* = circle *good* image information and move the selection over the damaged image area. Use this choice when you need to match a pattern or lines in the image.
- *Patching from Pattern* = the least used option – yet very useful method to quickly repair damage that is spread throughout the image. To use this method you need to create a pattern with the new Pattern Maker before clicking 'Use Pattern' (all to be explained).

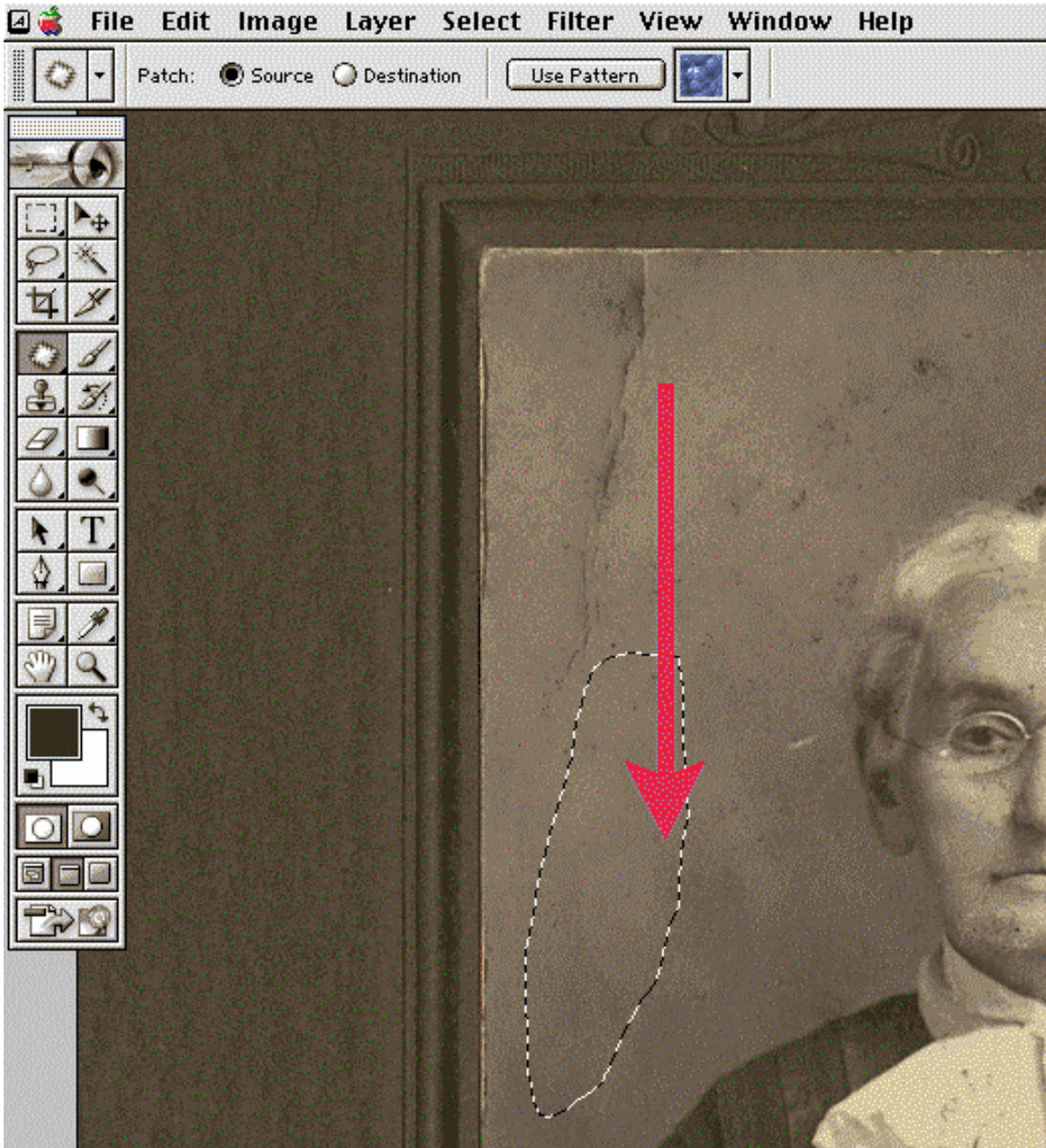
## Using the Patch Tool Tutorial:

### *Patching from Source:*

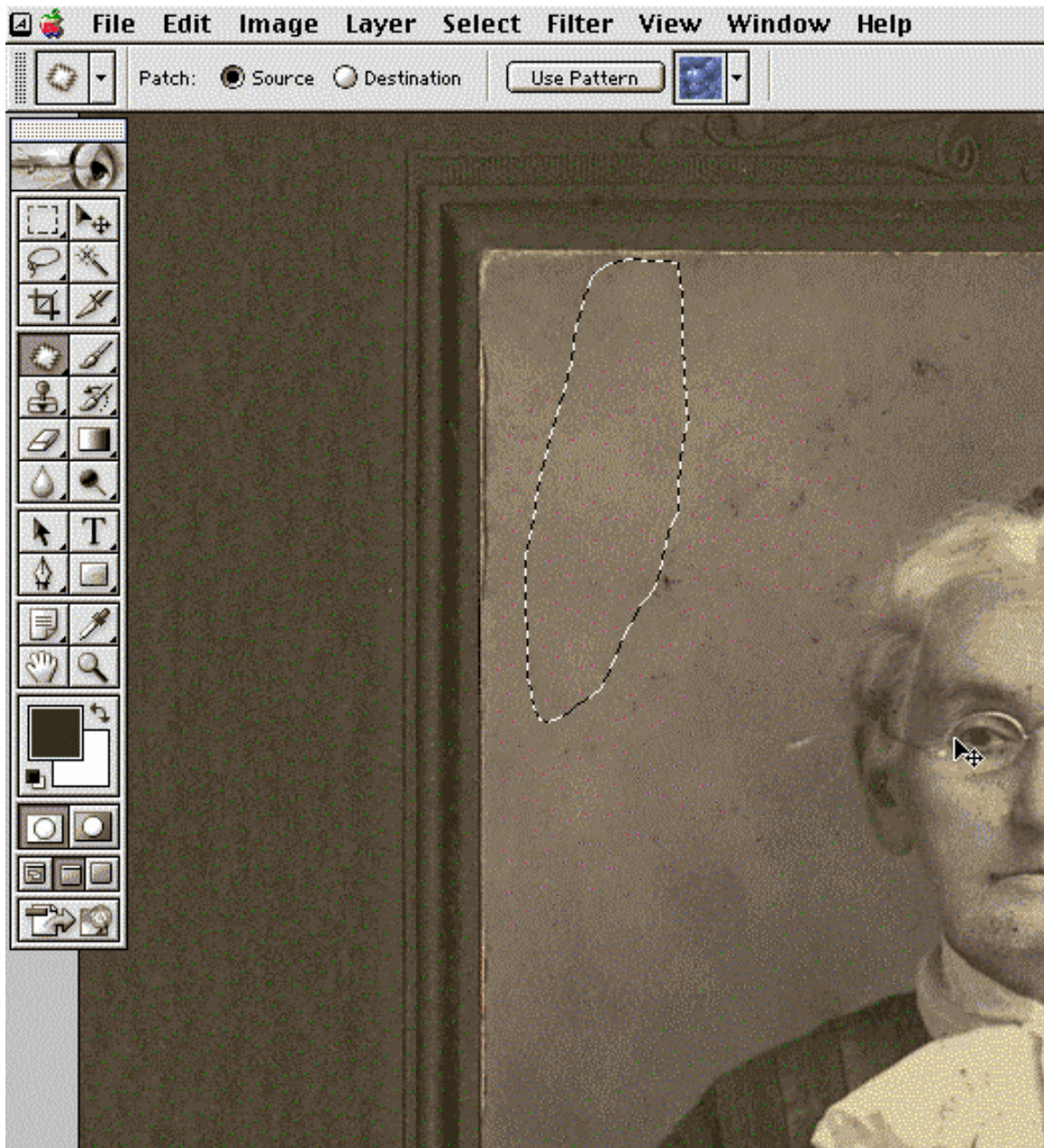
1. Select the damaged image area with either the Patch tool or the Lasso tool.
2. If needed use the standard command key options to refine your selection.
  - Shift-drag in the image to add to the existing selection
  - Alt-drag (PC) or Option-drag (Mac) to subtract from the existing selection
  - Or use Select > Transform Selection
3. Activate the Patch tool and check that the Source button is clicked as seen below.



4. Place the Patch tool in the center of the selection and drag the selection onto good image information (as seen below) and release the mouse.



The results of the Patch using source:

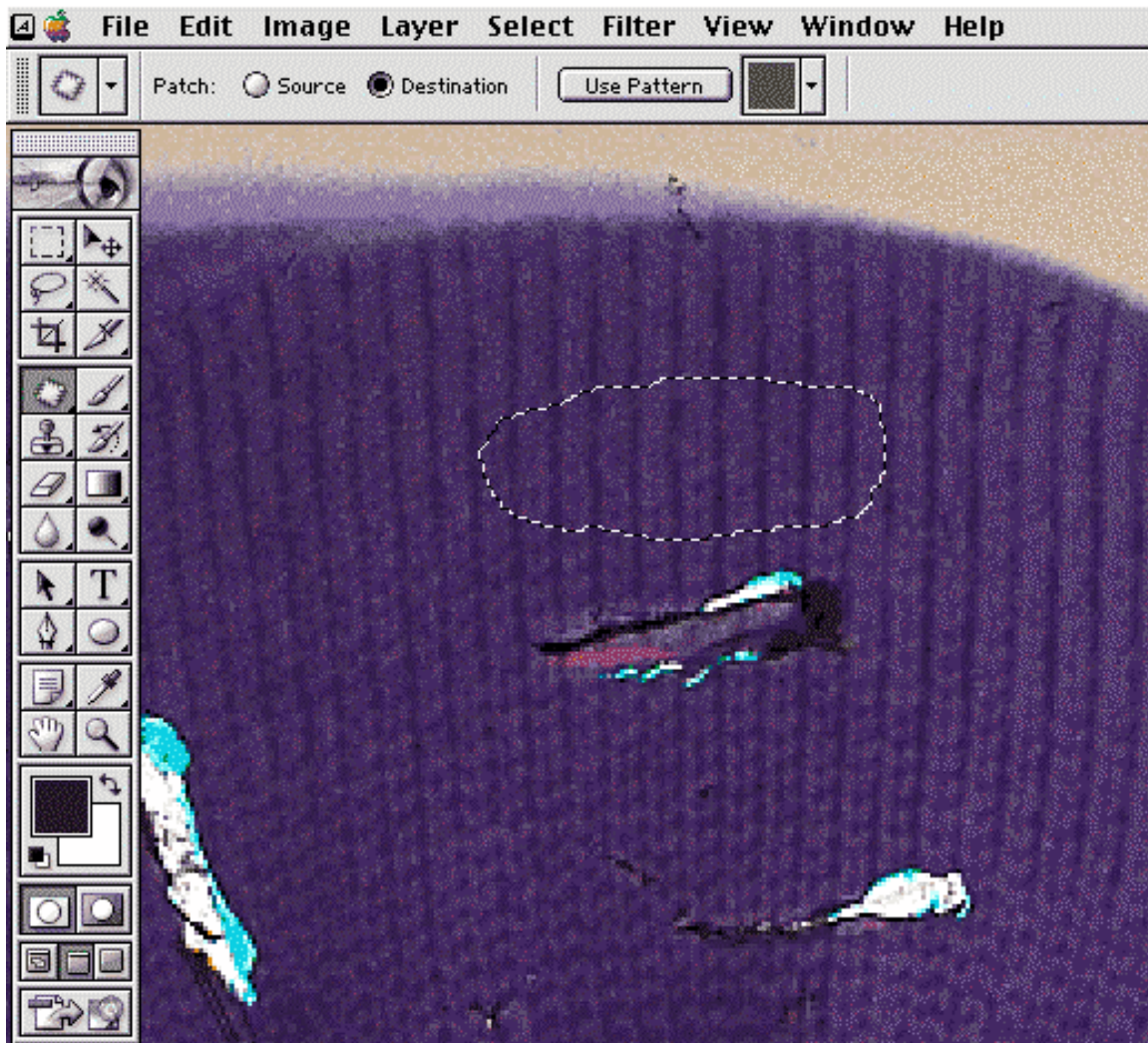


5. Finally with either the Patch tool or any selection tool - click outside of the active selection or command/control D to deselect the selection.

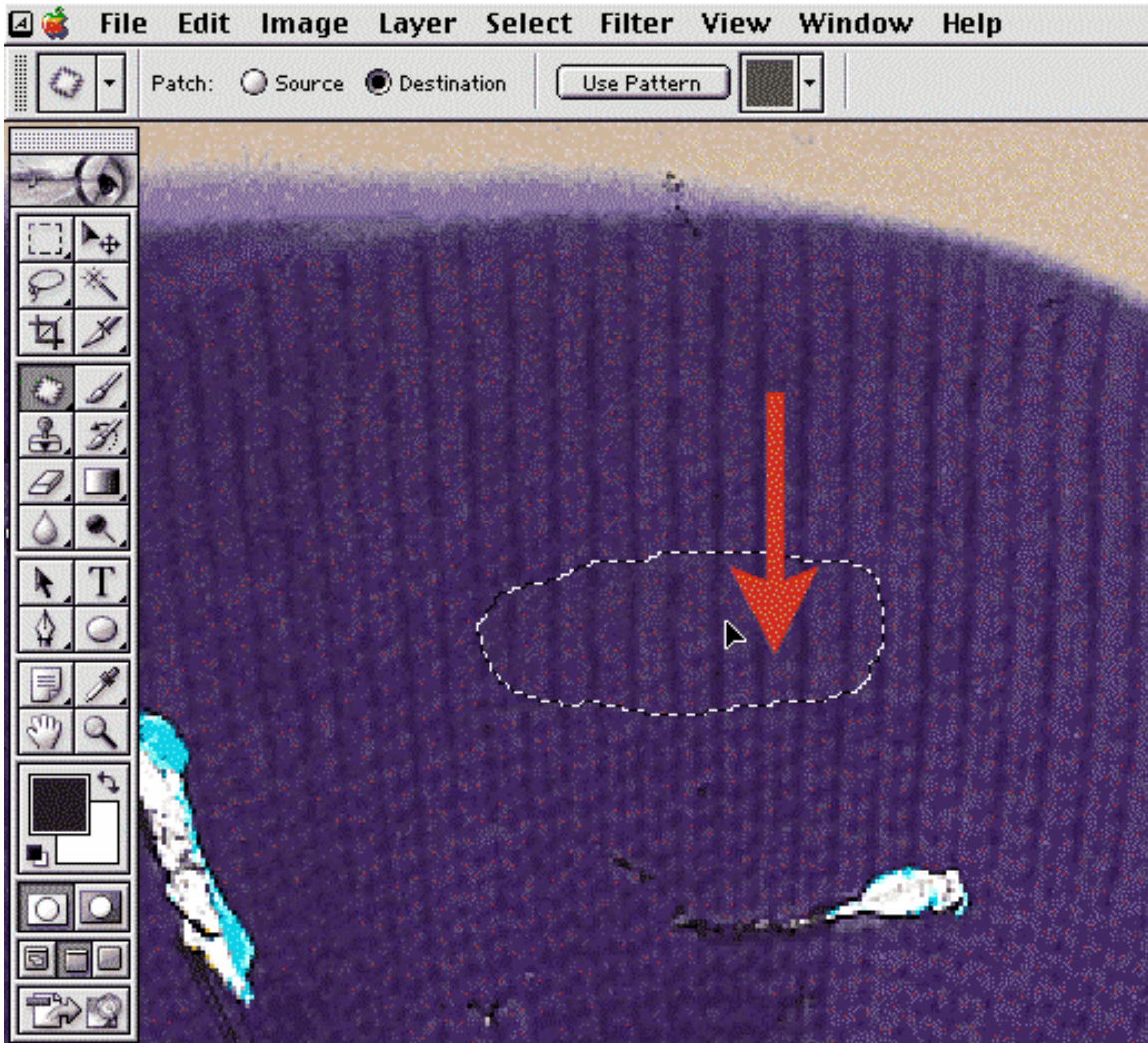
### *Patching from Destination Fundamentals:*

Use Patch from Destination when you need to match a pattern in the image. In the example seen here, I needed to repair extensive damage to the medium format chrome that had literally been dragged through the gutter. I used the Patch from Destination to repair the sweater where I had to align the patch with the knit pattern of the sweater.

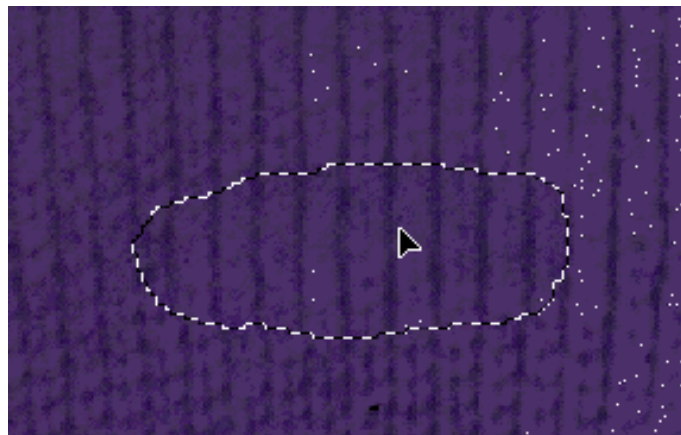
1. Select good image area with either the Patch tool or the Lasso tool. Good image information has the texture that you want Photoshop to use to repair the damaged image area. Use the standard command key options to refine your selection.
  - Shift-drag in the image to add to the existing selection
  - Alt-drag (PC) or Option-drag (Mac) to subtract from the existing selection
  - Or use Select > Transform Selection
2. Make sure that the Destination button is clicked as seen below.



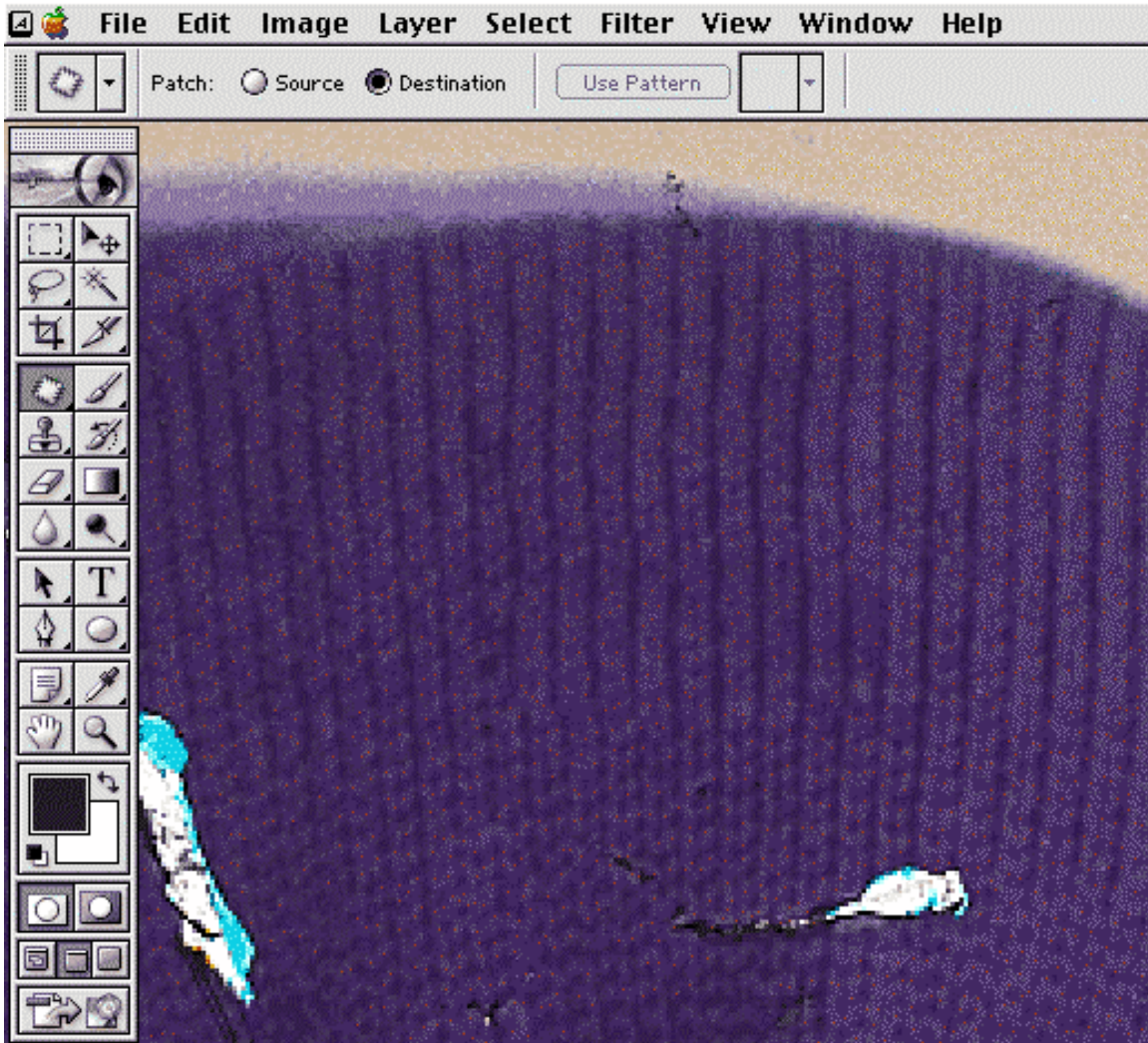
3. Place the Patch tool in the center of the selection and drag the good image over to the damaged area (as seen below).



4. As you drag the selection keep an eye on the ribbing of the sweater. As long as the mouse is depressed you can position the good image information with the pattern of the *to be patched* area to help match the pattern in the image (as seen below).



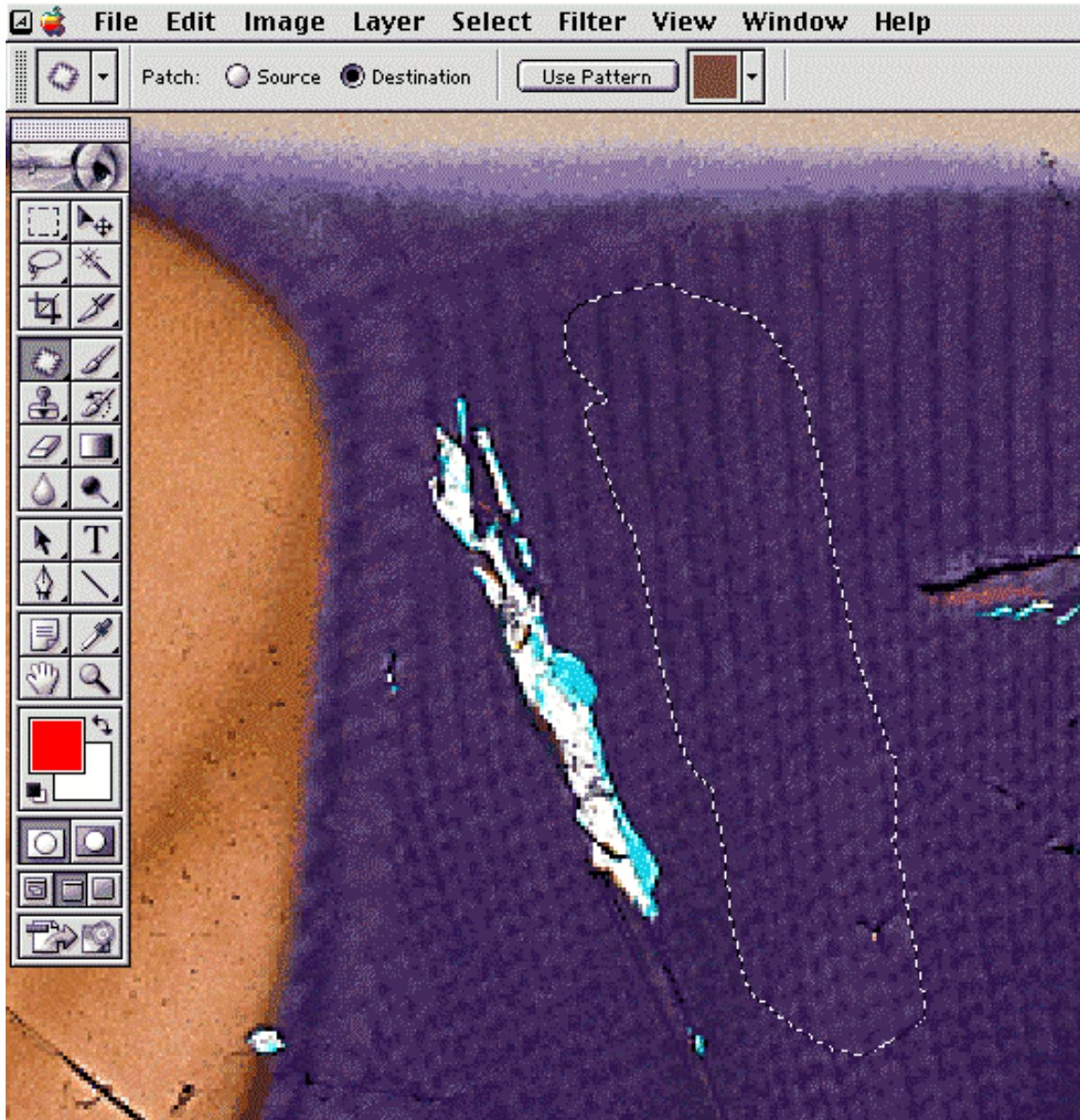
5. Once the selected area is in position release the mouse and Photoshop will patch the damaged area (as seen below).



*Patching from Destination: Advanced Technique:*

I learned this technique from Russell Brown of Adobe. This little documented method allows you to float a temporary patch and transform it into position to match even the most challenging patterns. It is ideal when you need a very accurate patch.

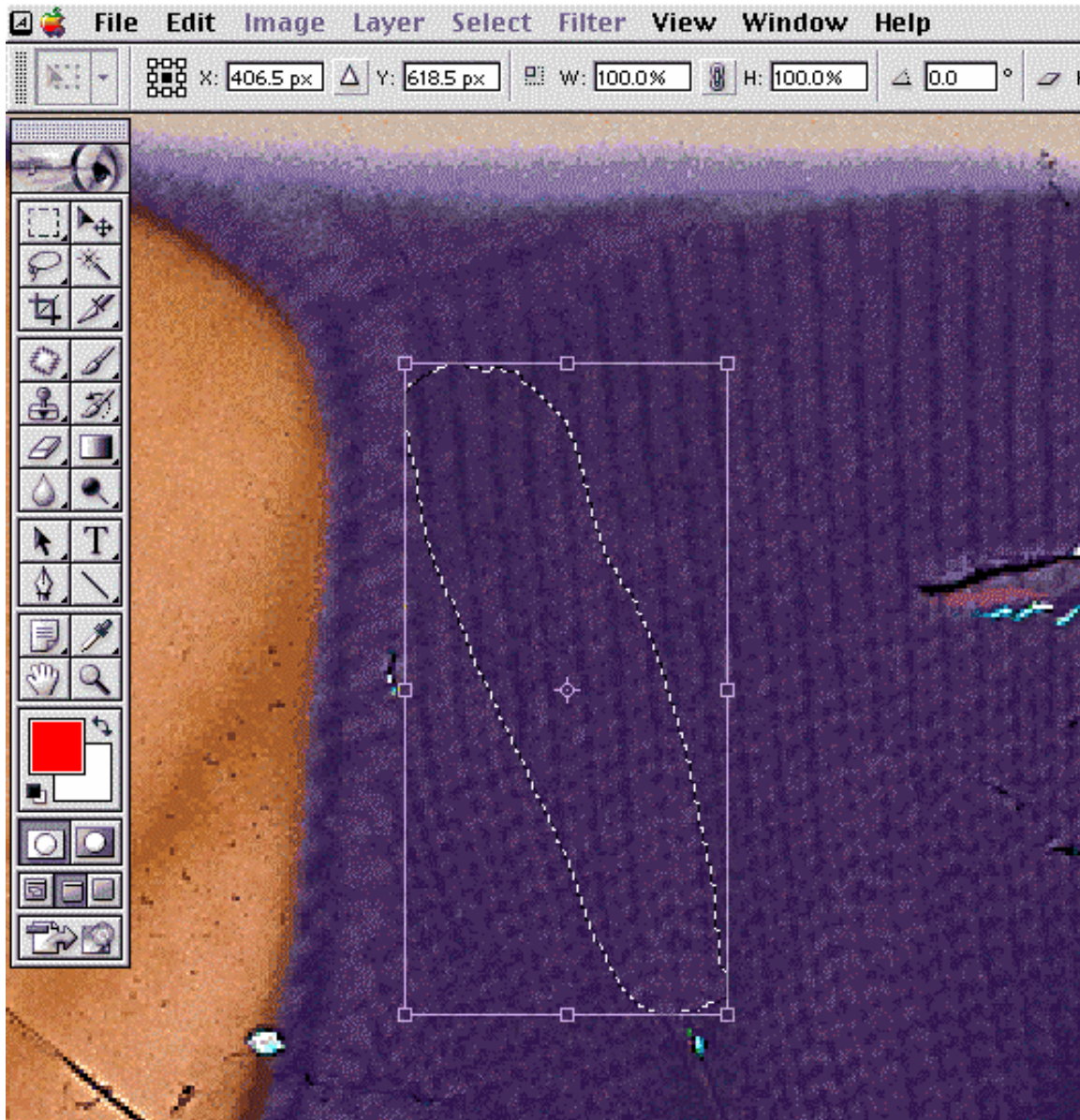
1. Select good image information and set the Patch tool to *destination* (as seen below).



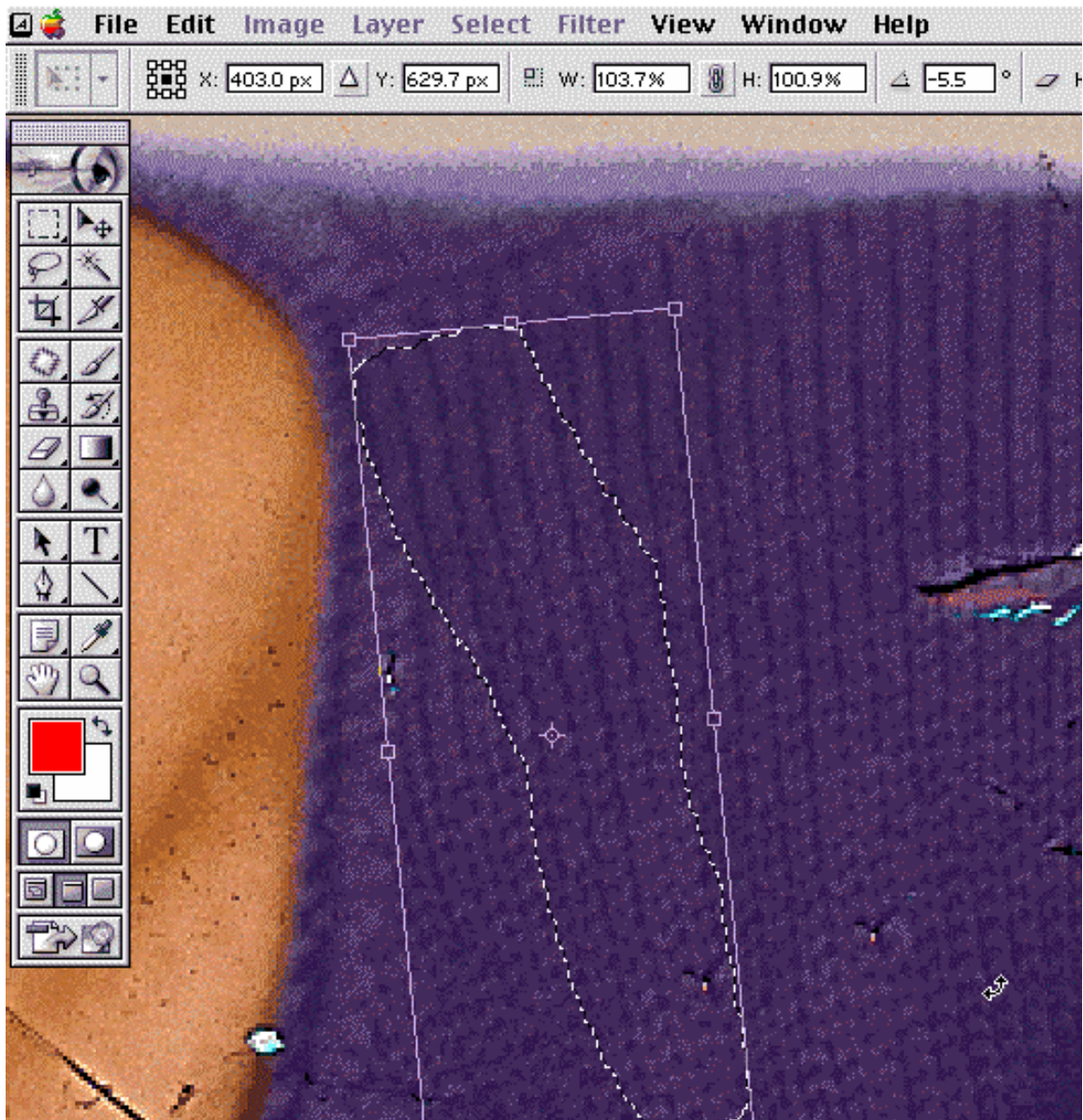
2. With the Patch tool command + option (Mac) or control + alt (PC) click inside of the selection to create a floating patch.
3. Keep the modifier keys depressed and move the selection into position.



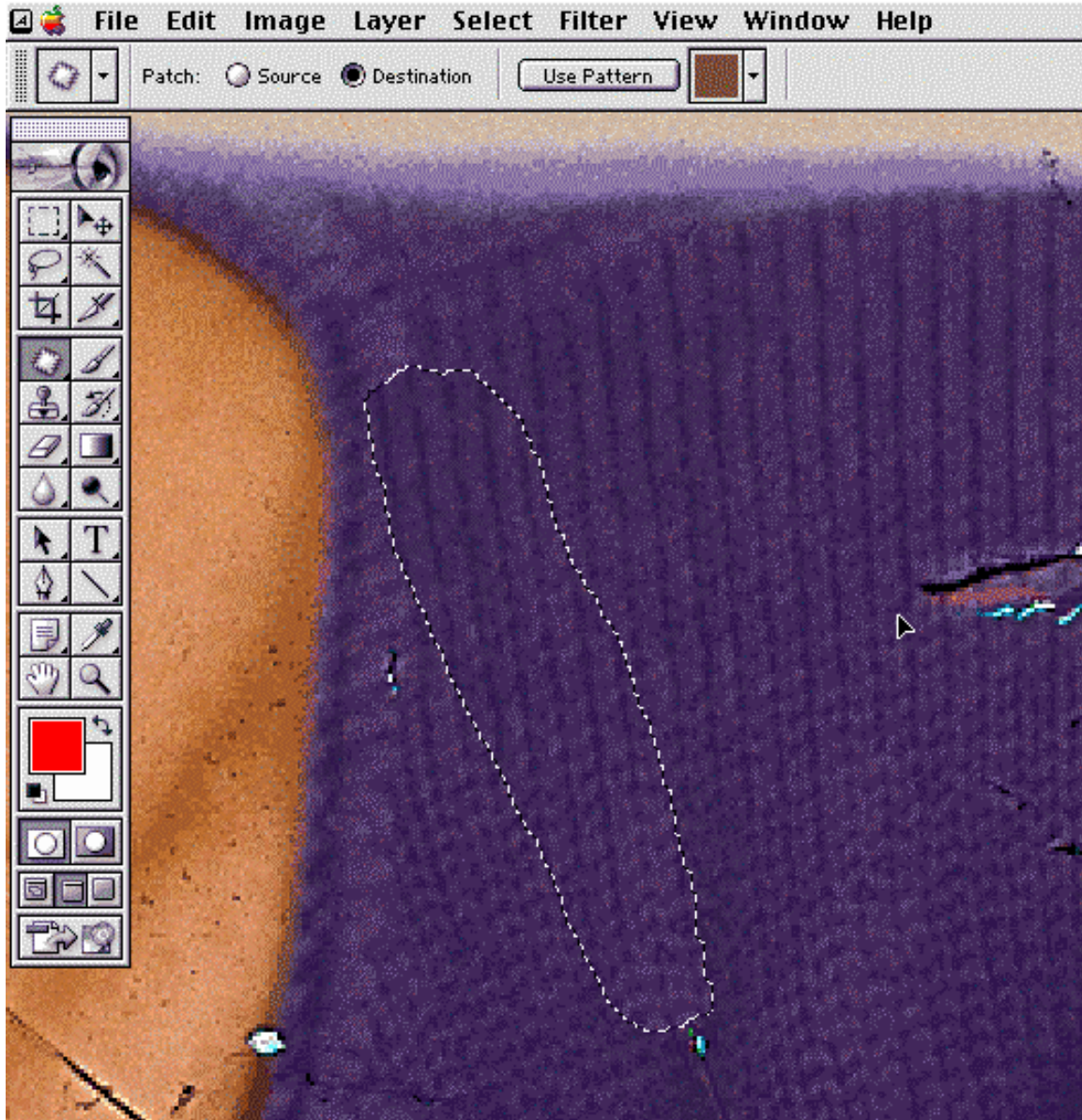
4. Release the option (Mac) or alt (PC) and tap the T to bring up the Free Transform bounding box (as seen below).



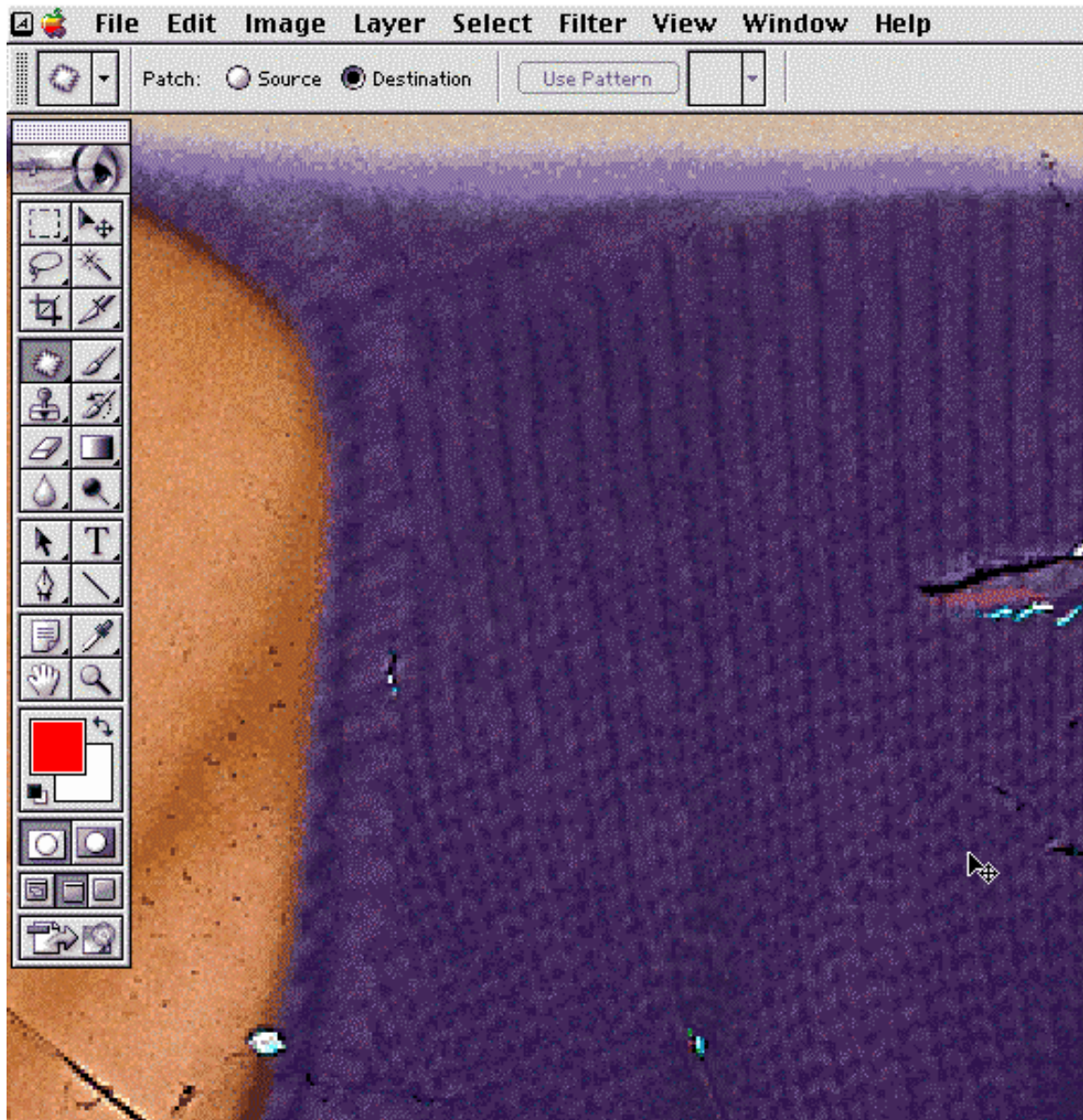
5. Use the 'Free Transform' to rotate, scale, etc. the patch to fit the area that needs to be repaired (as seen below). Click Enter to accept the transformation.



6. Now make sure that the Patch tool is active and move the mouse into the active selection.



7. Reposition the patch (this reactivates the healing brush engine) and tap the enter key again to tell Photoshop to heal with the transformed information. The last move with the Patch tool can be as slight as a single pixel move but you have to do it in order to reawaken the healing engine. The final results are shown on the following page.



Above: After floating and transforming the good sweater information the ensuing patch is practically invisible and will require just a bit more healing or cloning to finish the job.

The last step is to Select > Deselect or command/control D to drop the active selection.

---

As you can imagine, Russell Brown's demonstration had a lot more humor in it. He used this float and move technique to add hair onto the receding hairline of a male model. So I tried it too . . . as seen on the next page. Original photography by John Warner [www.warnerphotography.com](http://www.warnerphotography.com)



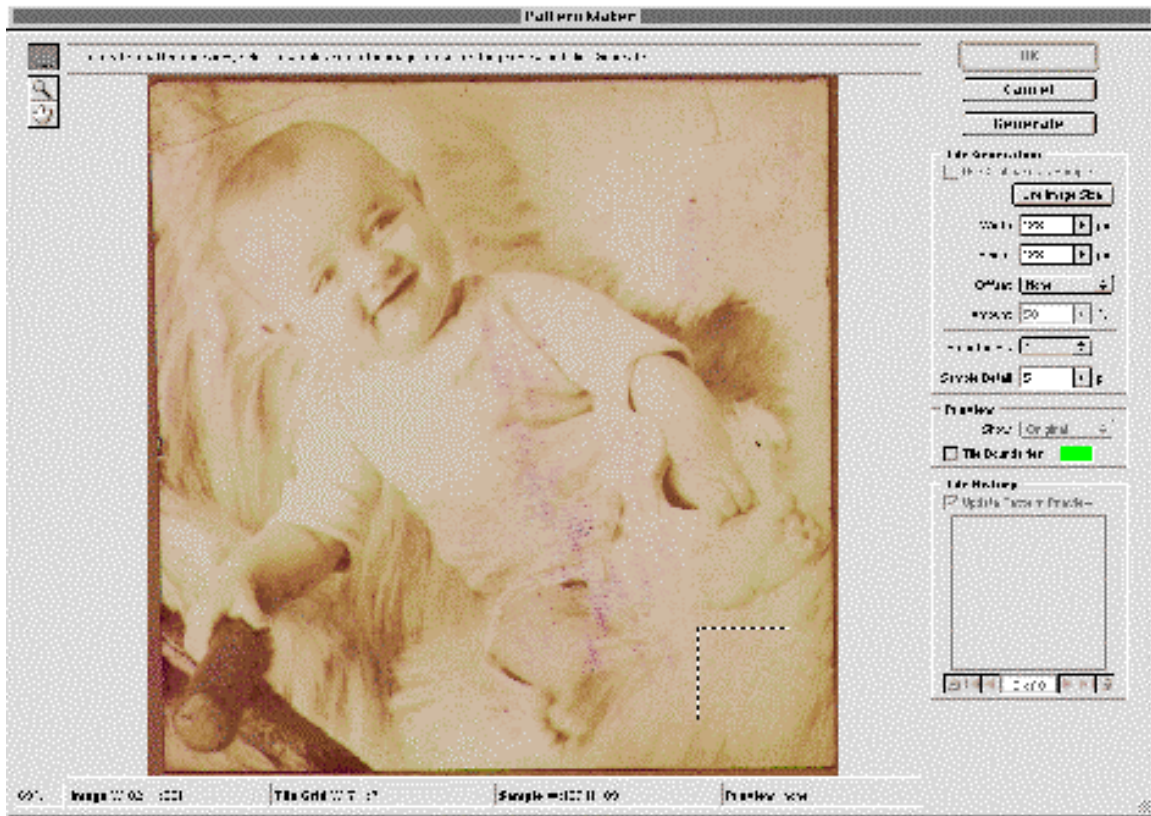
### *Patching with Pattern:*

Defining a pattern to repair an image is a fantastic technique that can be used with both the Healing Brush and the Patch tool. Although this is the least used option it is a very useful method to quickly repair damage that is spread throughout the image. Before using a pattern to heal an image you need to define the pattern as explained here.

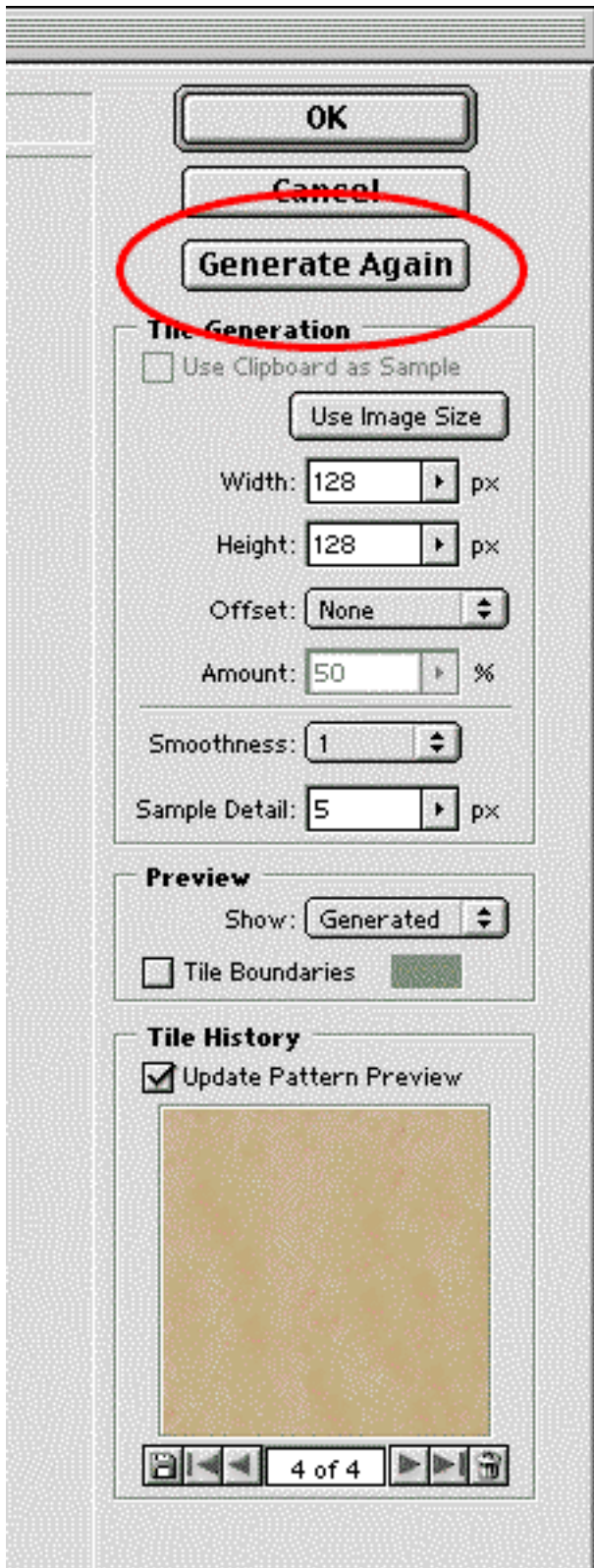
1. Use the Healing Brush or the Clone tool to perfect one area of an image that will be used to create the pattern.
2. Use the Marquee tool to frame it as seen here.



3. Go Filter > Pattern Maker to bring up the new Pattern maker interface.

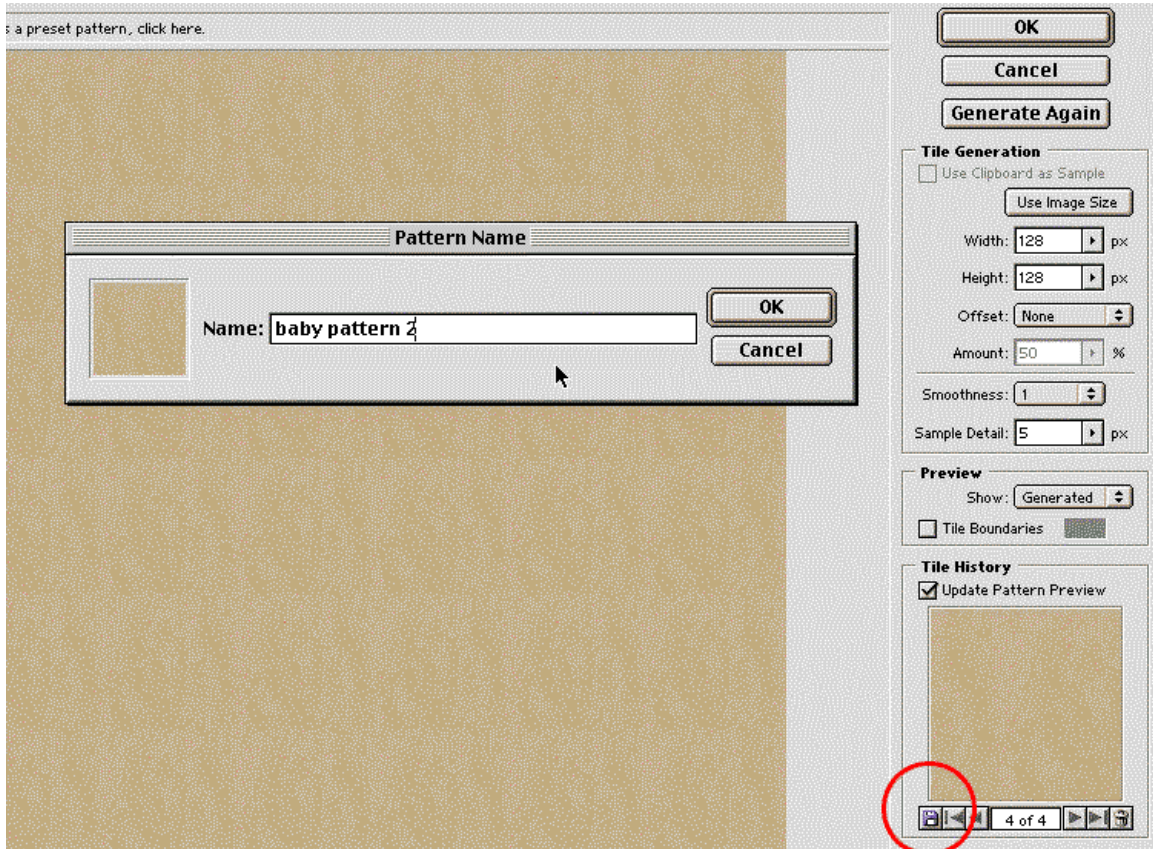


4. Click on the Generate button in the upper right hand corner to fill the image with a pattern from your selection. The image will look ruined and rather reptilian as the file is covered with the pattern – don't worry. Keep your eye on the lower right hand corner and watch the generated tile. Your goal is to generate a pattern that reflects the best possible pattern and texture for your image. In case you are not happy with the initial pattern that Photoshop generated simply click on the "Generate Again" button as circled on the following page.

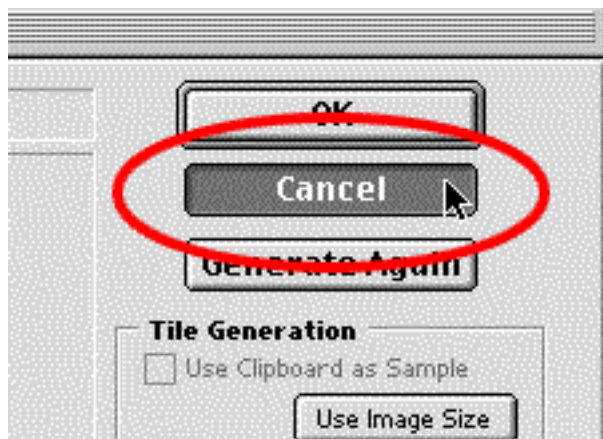




5. After clicking Generate Again button you can scroll to the left and right of the created patterns by clicking on the small left/right triangles under the patterns.
6. Click to the best pattern and then click on the tiny floppy disk button icon to save that pattern into your pattern library. Name the pattern.



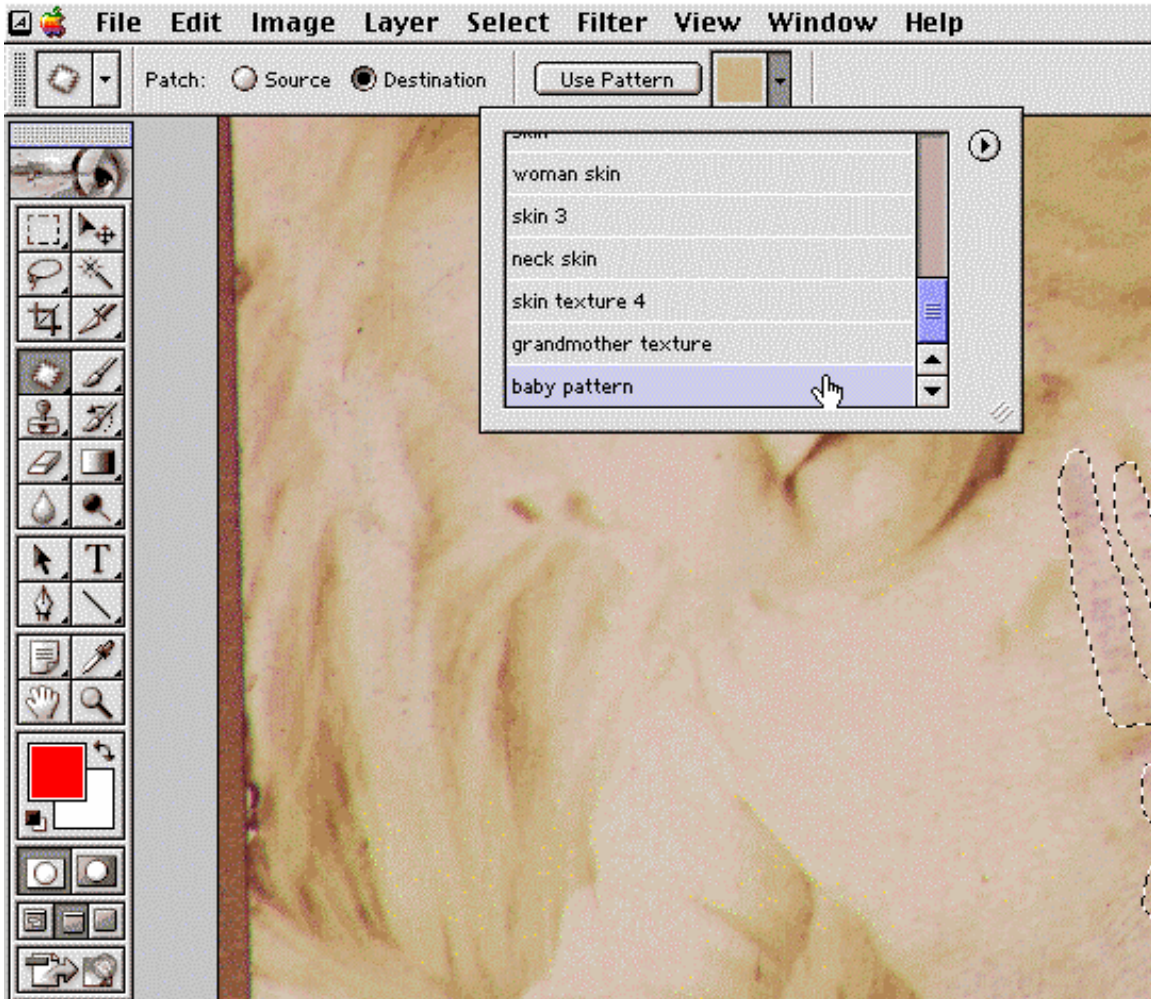
7. Once you have done the above steps the next step is HUGELY important. Hit cancel to exit the Pattern Maker and not cover the file with the pattern. The pattern you generated is safely in the pattern library for you to use.



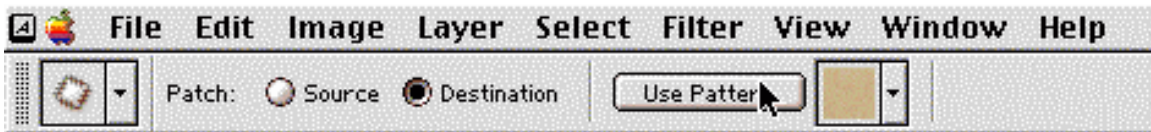
8. Select the damaged areas as seen here.



9. Activate the Patch tool, click on the pattern library in the patch tool options bar and select the pattern you just created.



10. Click on the Use Pattern button and sit back as Photoshop heals the selected areas to create the results as seen on the following page.





The pattern technique is a fantastic method as you can use patterns from one image on a different image. In conclusion, the Patch tool is MUCH more than a less important part of the Healing tool. It is an amazing tool that will speed up your work and make your images look better very quickly.